

# Pattern Graphix User Guide

**Pattern Graphix** is a plug-in that automatically detects technical analysis patterns in SuperForex MetaTrader 4.

Patterns are sought in real time. When they are detected, the plug-in displays in the chart window the output of a pop-up message – a so-called 'alert' (additional settings required); it can also send emails and Push-mails for smartphones running Android or iOS.

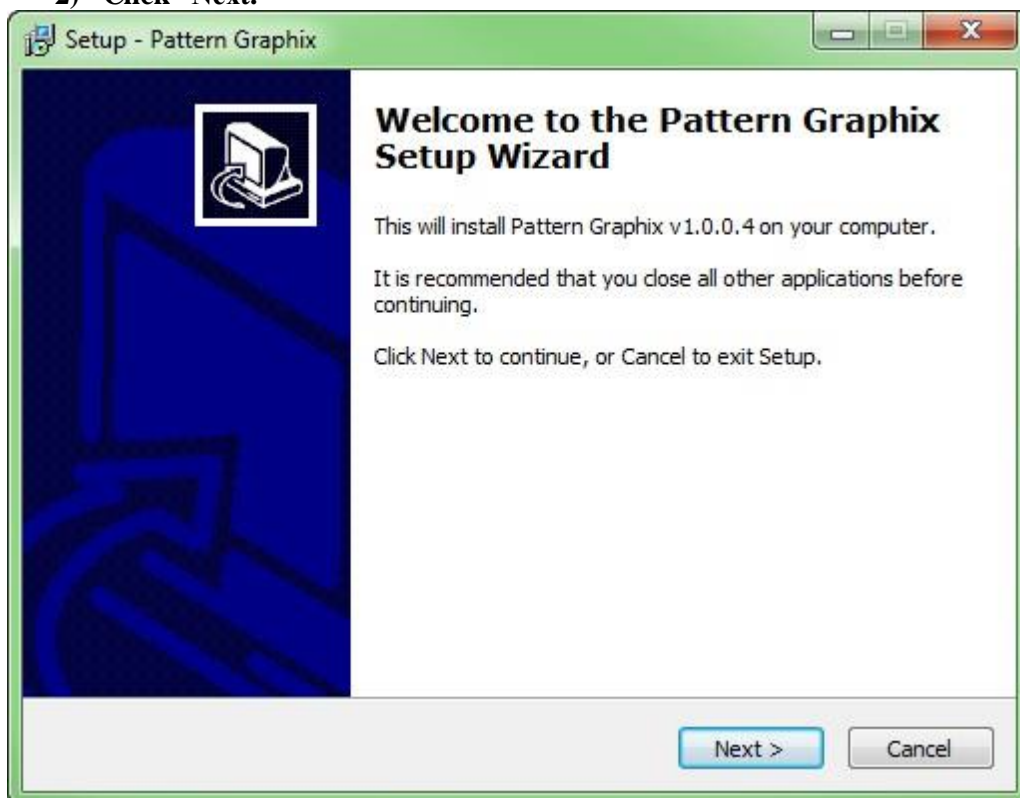
## Installation

Follow the steps below to install Pattern Graphix:

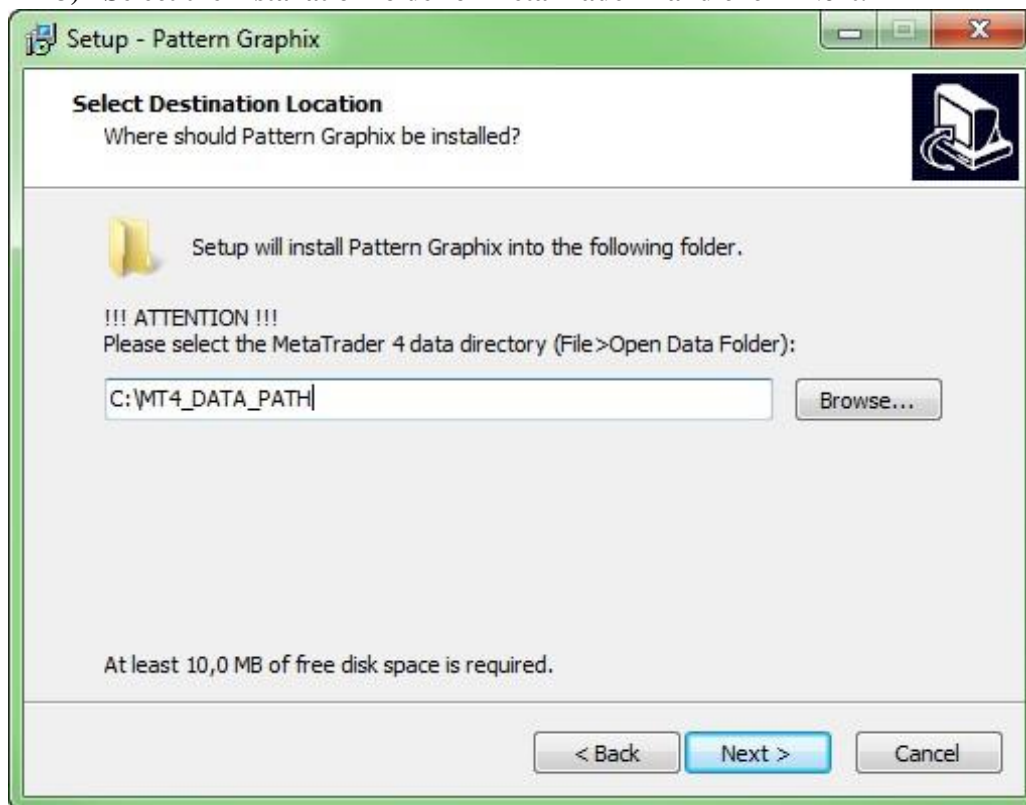
- 1) **Run the Pattern Graphix .exe file and click “Yes.” Chose the installation language preferred and click “OK.”**



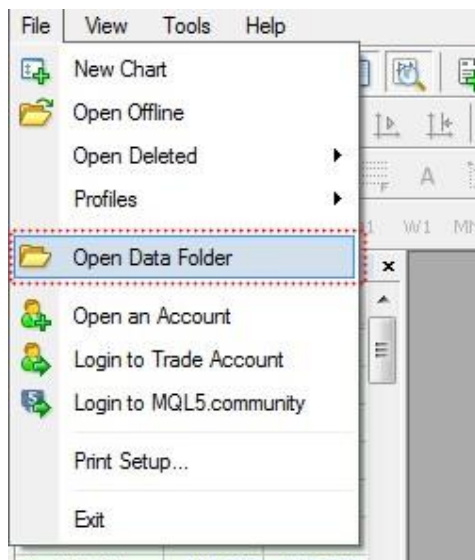
- 2) **Click “Next.”**



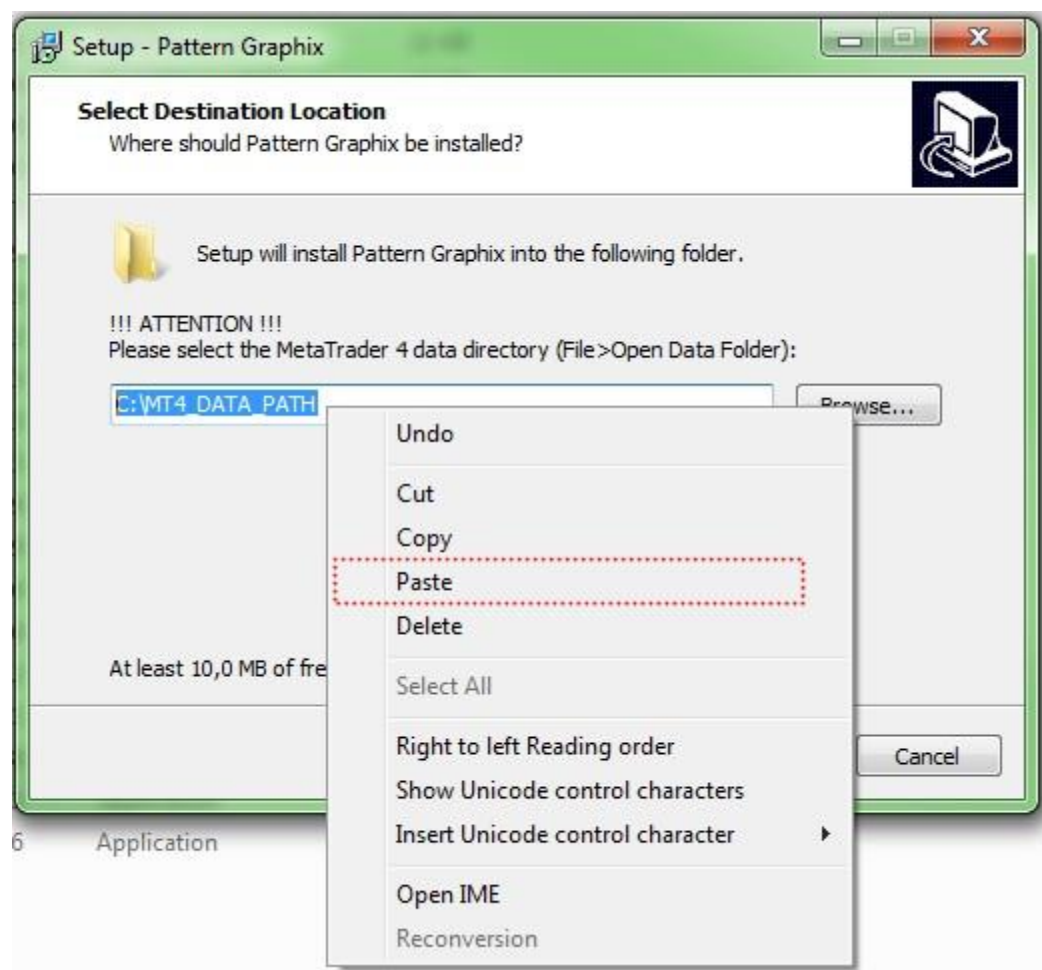
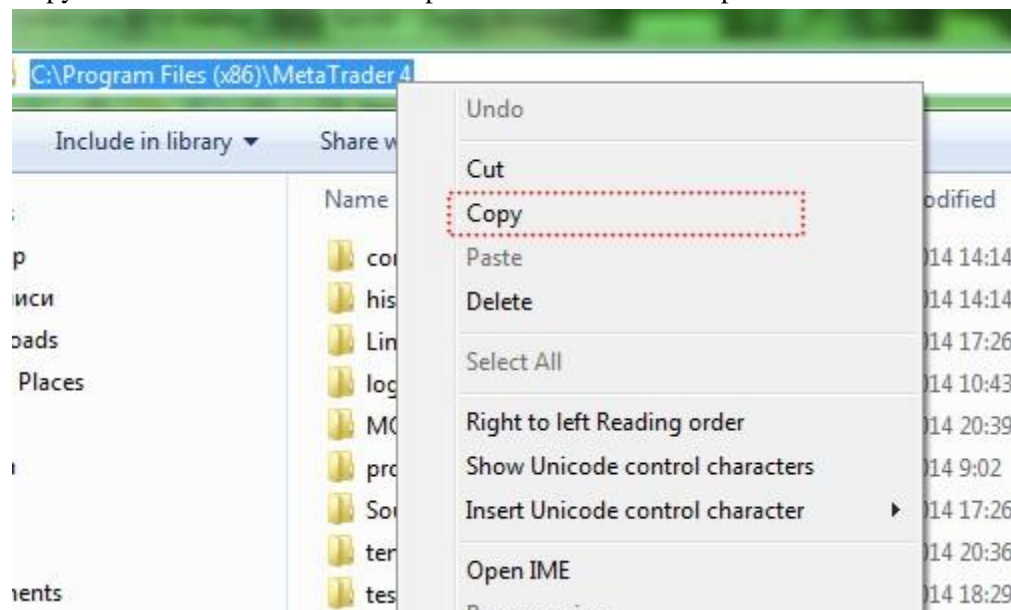
**3) Select the installation folder of MetaTrader 4 and click “Next.”**



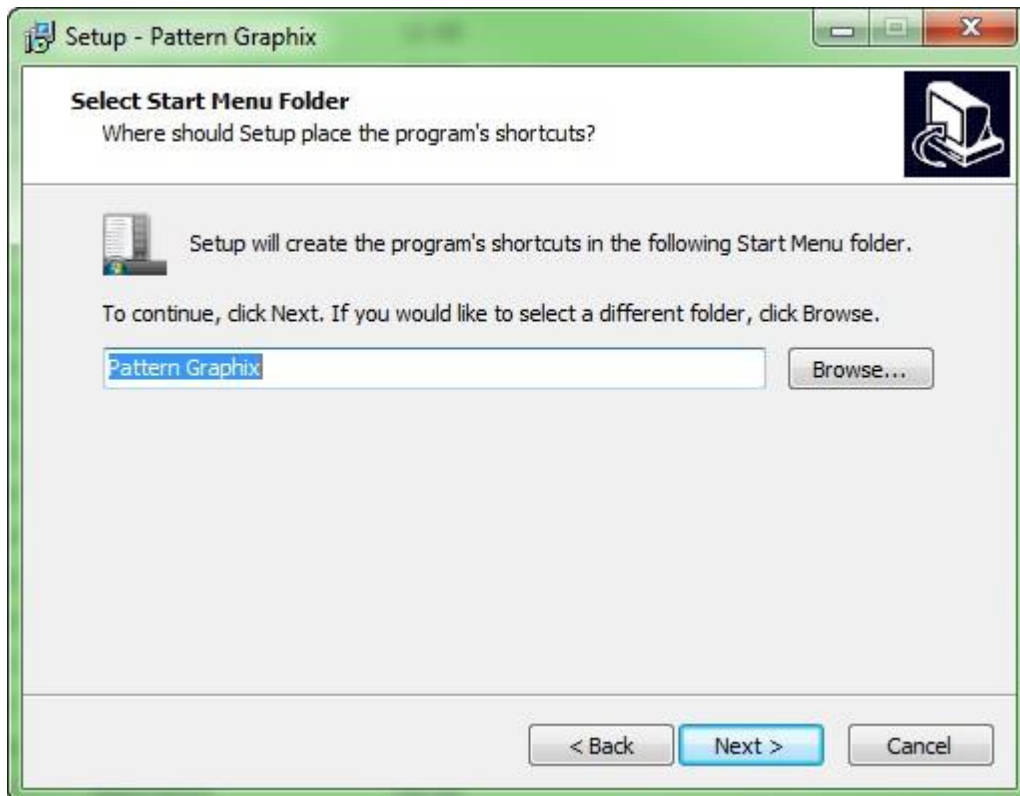
If you don't know the platform's location, run MetaTrader 4 and choose Open Data Folder from the File menu:



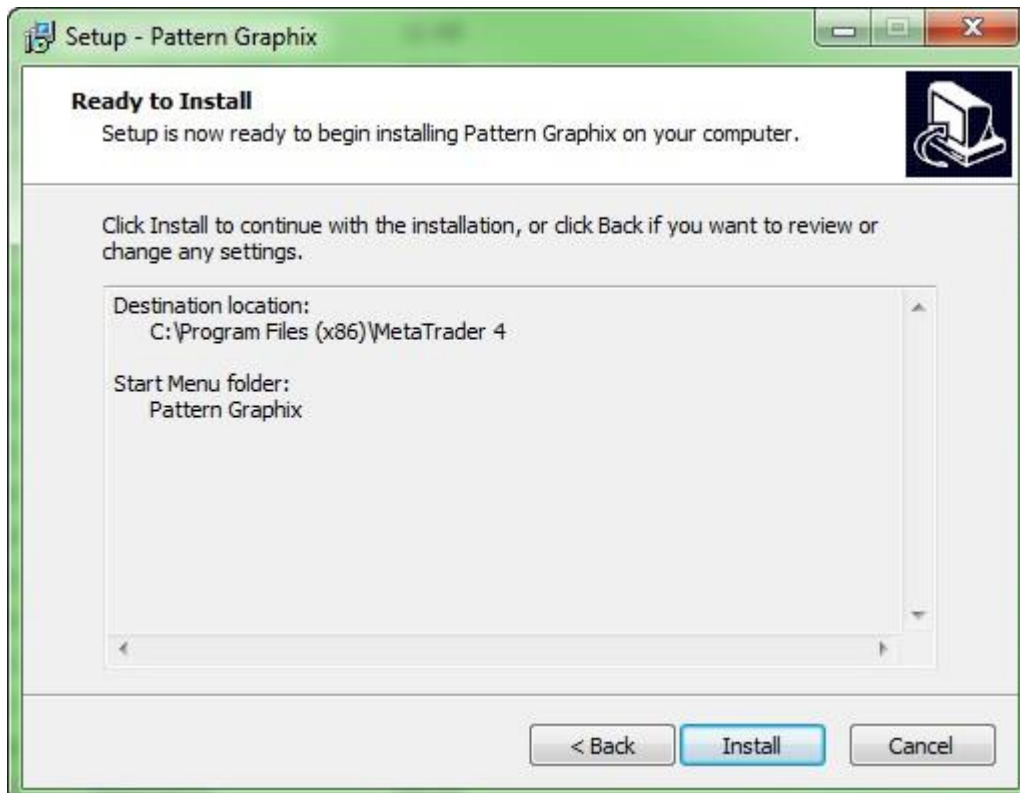
Copy the location of the folder and paste it in the Pattern Graphix installer:



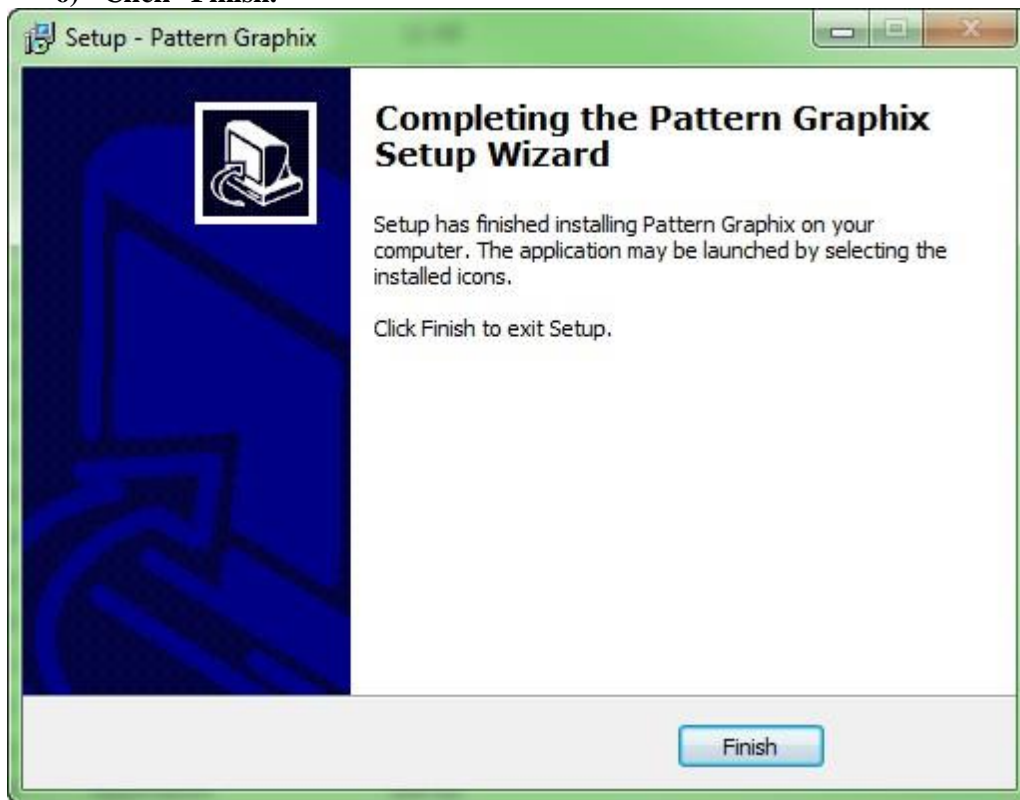
- 4) Select a folder in the Start menu (the default setting is recommended) and click “Next.”



- 5) Click “Install.”



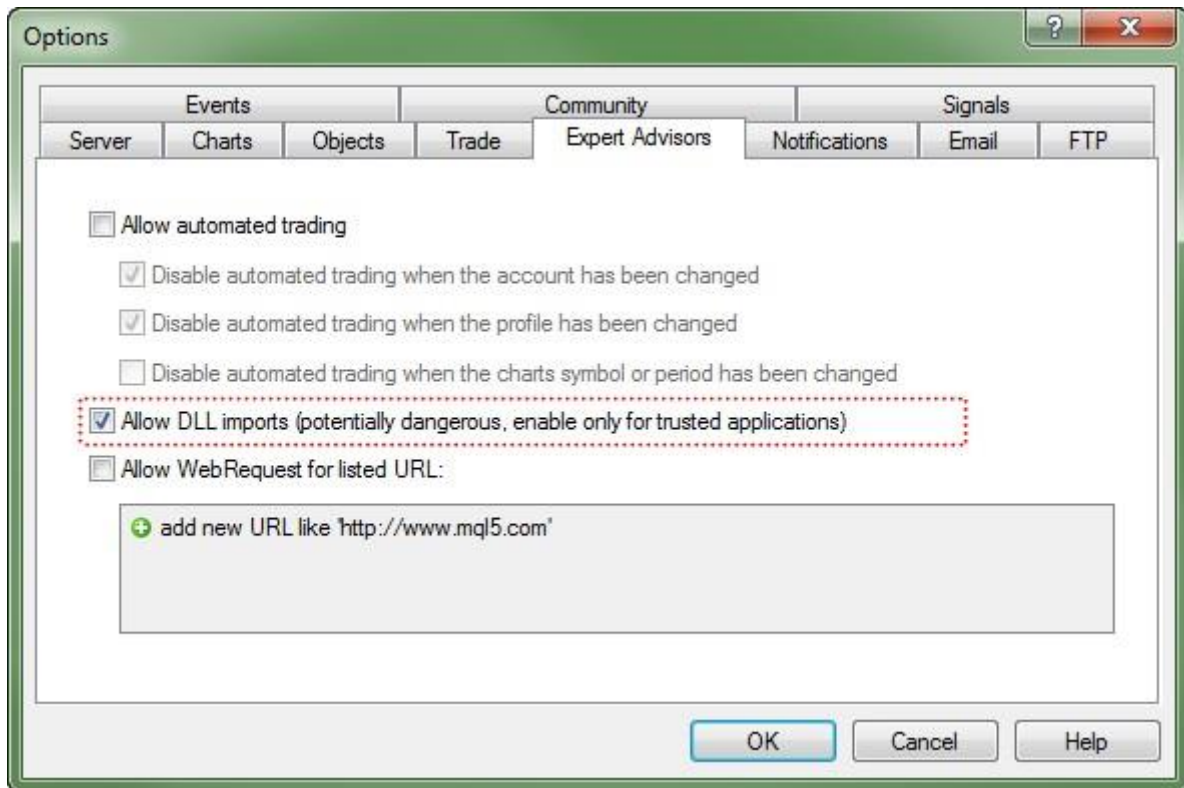
6) Click “Finish.”



The installation of Pattern Graphix is complete.

## MetaTrader 4 Settings

After the installation of **Pattern Graphix**, you should run **MetaTrader 4** (or rerun, if it was already open during the installation) and set the following parameters (Tools → Options → Expert Advisors):



Check 'Allow DLL imports.'

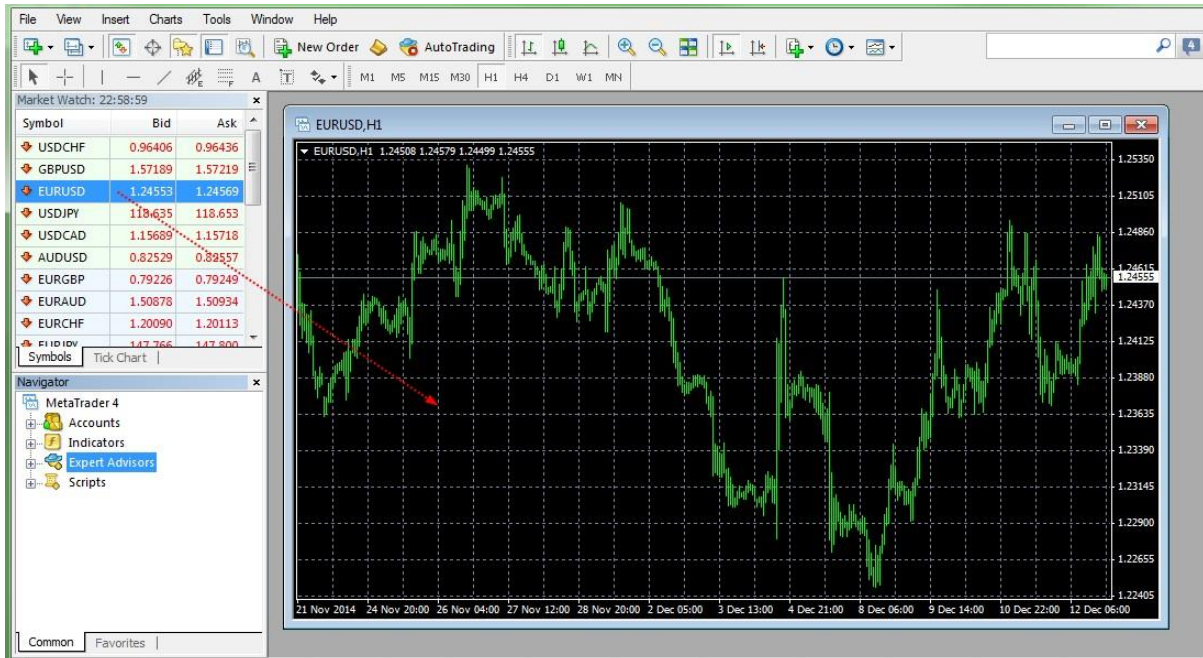
Pattern Graphix does not perform automatic trading operations, nor does it require WebRequest.



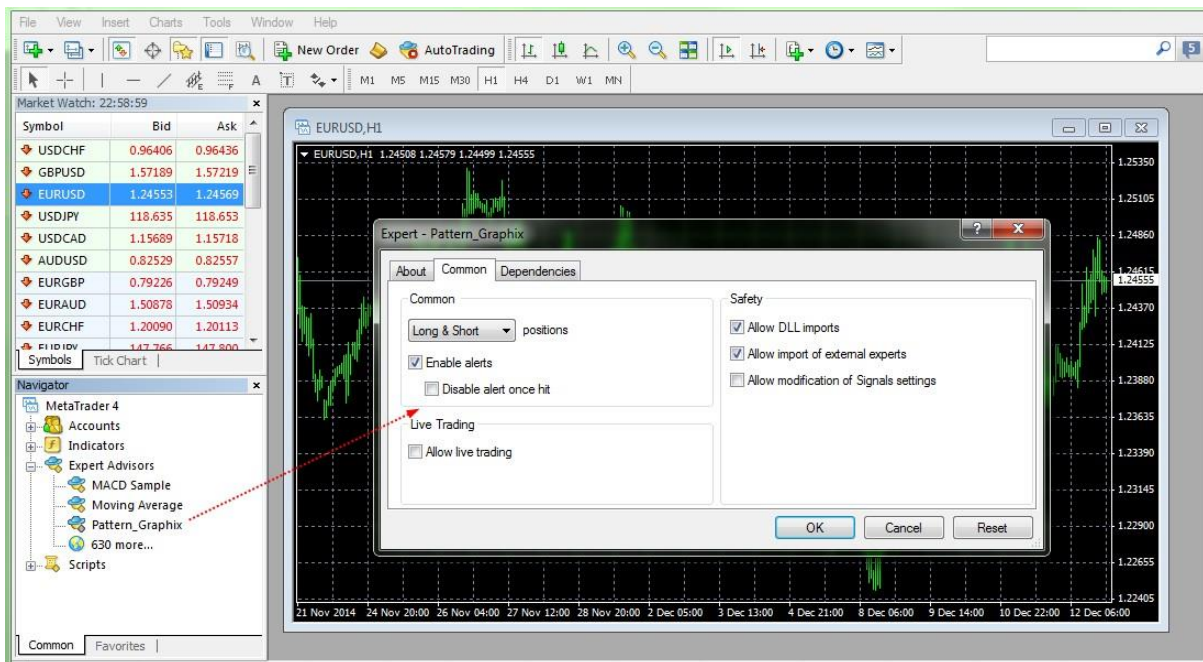
## Pattern Graphix Run

To run Pattern Graphix you should:

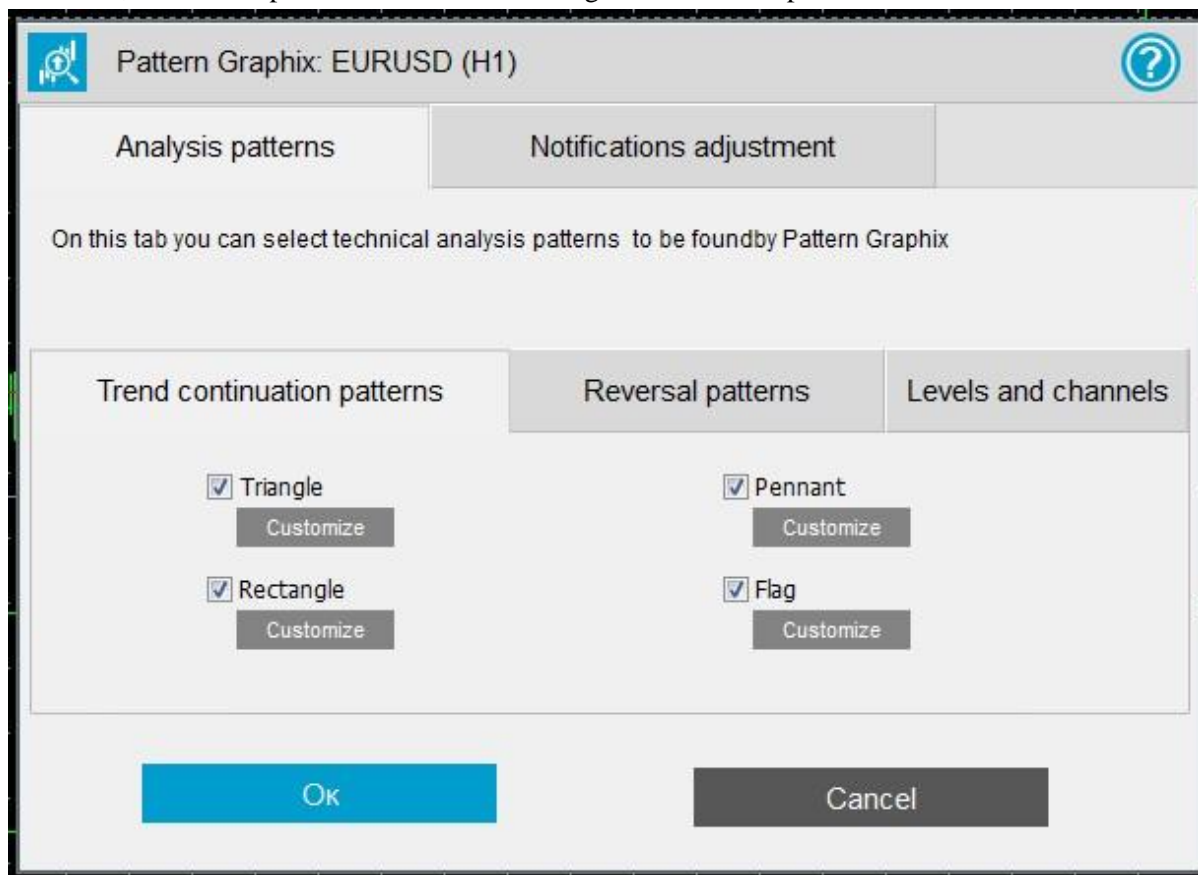
- 1) **Open the chart of the needed trading instrument.**



- 2) **Go to Navigator → Expert Advisors and find the Pattern Graphix advisor and drag it to the chart window; in the window that opens click “OK.”**



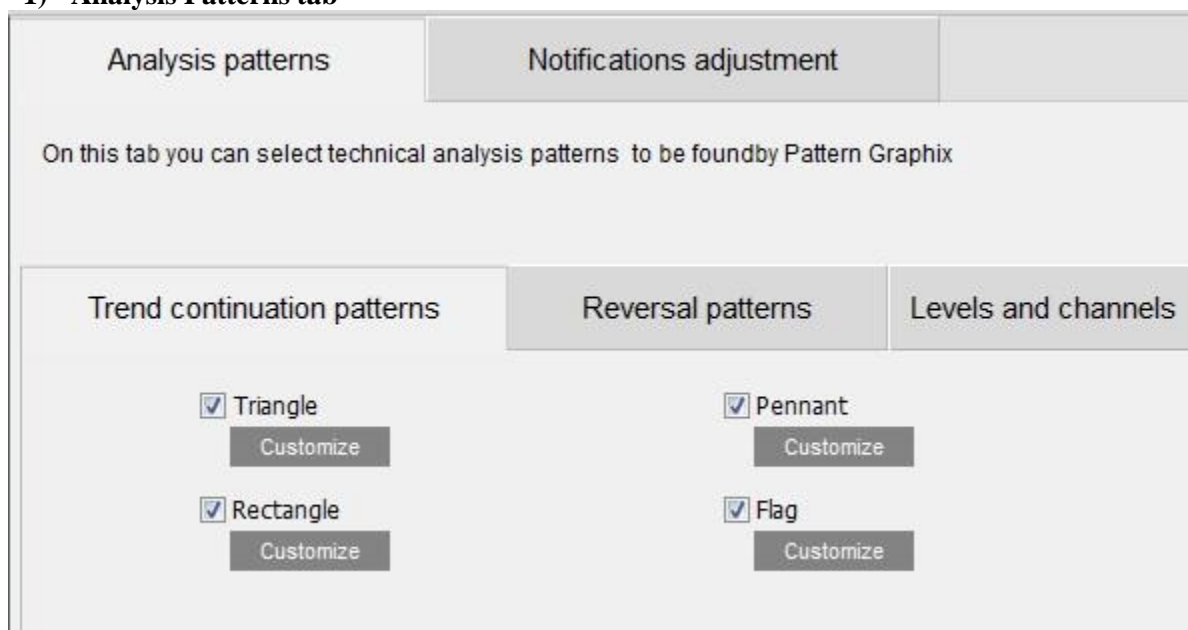
After that, Pattern Graphix will run and the settings window will open:



## Pattern Graphix Settings

The Pattern Graphix settings' window consists of two main elements:

### 1) Analysis Patterns tab





### 1.1 Trend continuation patterns

Trend continuation patterns	Reversal patterns	Levels and channels
<input checked="" type="checkbox"/> Triangle <div>Customize</div>	<input checked="" type="checkbox"/> Pennant <div>Customize</div>	
<input checked="" type="checkbox"/> Rectangle <div>Customize</div>	<input checked="" type="checkbox"/> Flag <div>Customize</div>	

There are the following trend continuation patterns: **triangle**, **rectangle**, **pennant**, and **flag**. You can change the display color for each pattern by clicking “Customize.”

### 1.2 Reversal patterns

Trend continuation patterns	Reversal patterns	Levels and channels
<input checked="" type="checkbox"/> Head and Shoulders <div>Customize</div>	<input checked="" type="checkbox"/> Double Top/Bottom <div>Customize</div>	
<input checked="" type="checkbox"/> Triple Top/Bottom <div>Customize</div>		

There are such reversal patterns as **head and shoulders**, **triple top and triple bottom**, **double top and double bottom**. You can change the display color for each pattern by clicking “Customize.”

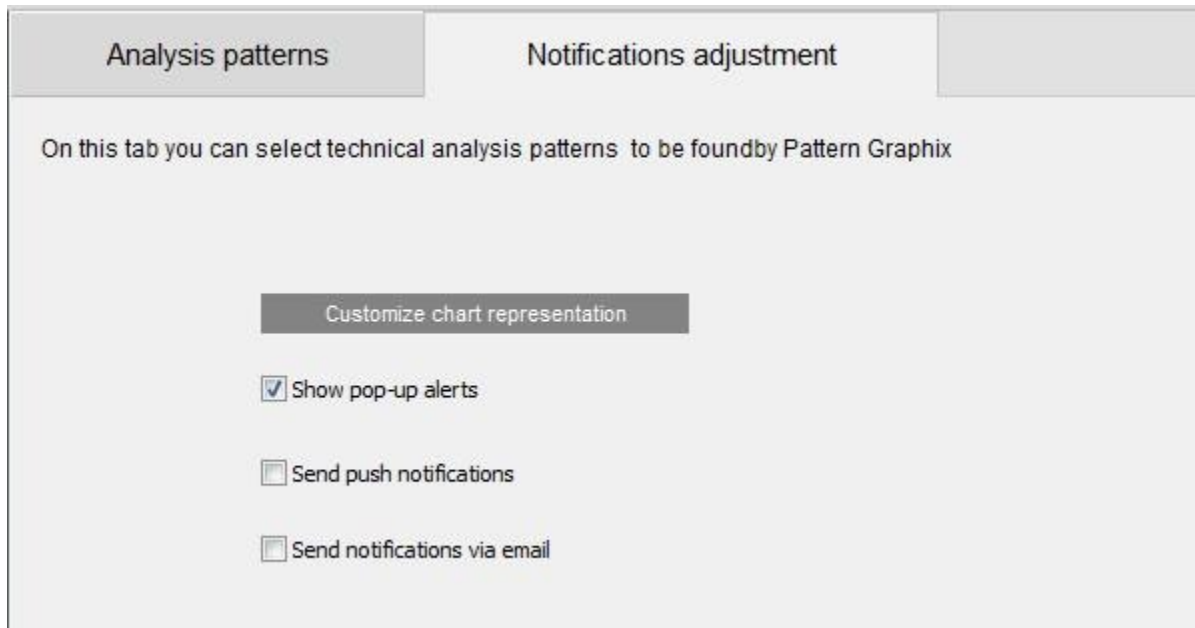
### 1.3 Levels and channels subtab

Trend continuation patterns	Reversal patterns	Levels and channels
<input checked="" type="checkbox"/> Support and resistance levels <div>Customize</div>	<input checked="" type="checkbox"/> Fibo levels <div>Customize</div>	
<input checked="" type="checkbox"/> Trend channel <div>Customize</div>		

There are lines and levels such as **support and resistance levels**, **trend channel**, and **Fibo levels**.

You can change the display color for each group by clicking “Customize.”

## 2) Notifications Adjustment Tab:



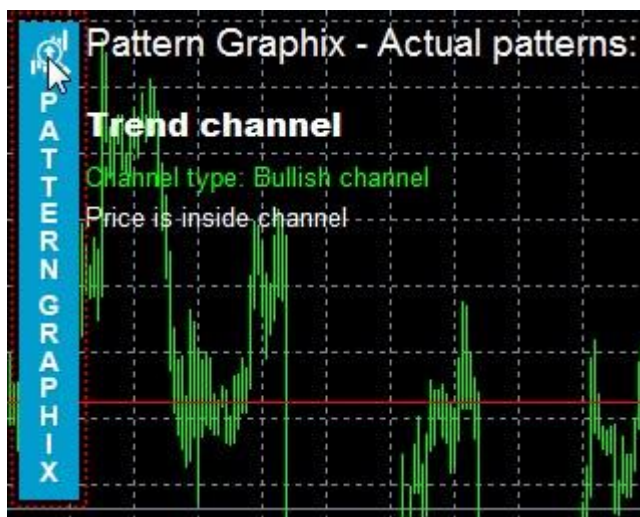
You can select your notification settings from here. In the current version, notifications are available only for trend continuation patterns and reversal patterns.

## Opening the Settings Window

During your first run of Pattern Graphix, the settings window will open. Later on, the settings window can be opened by clicking the corresponding button on the chart window:

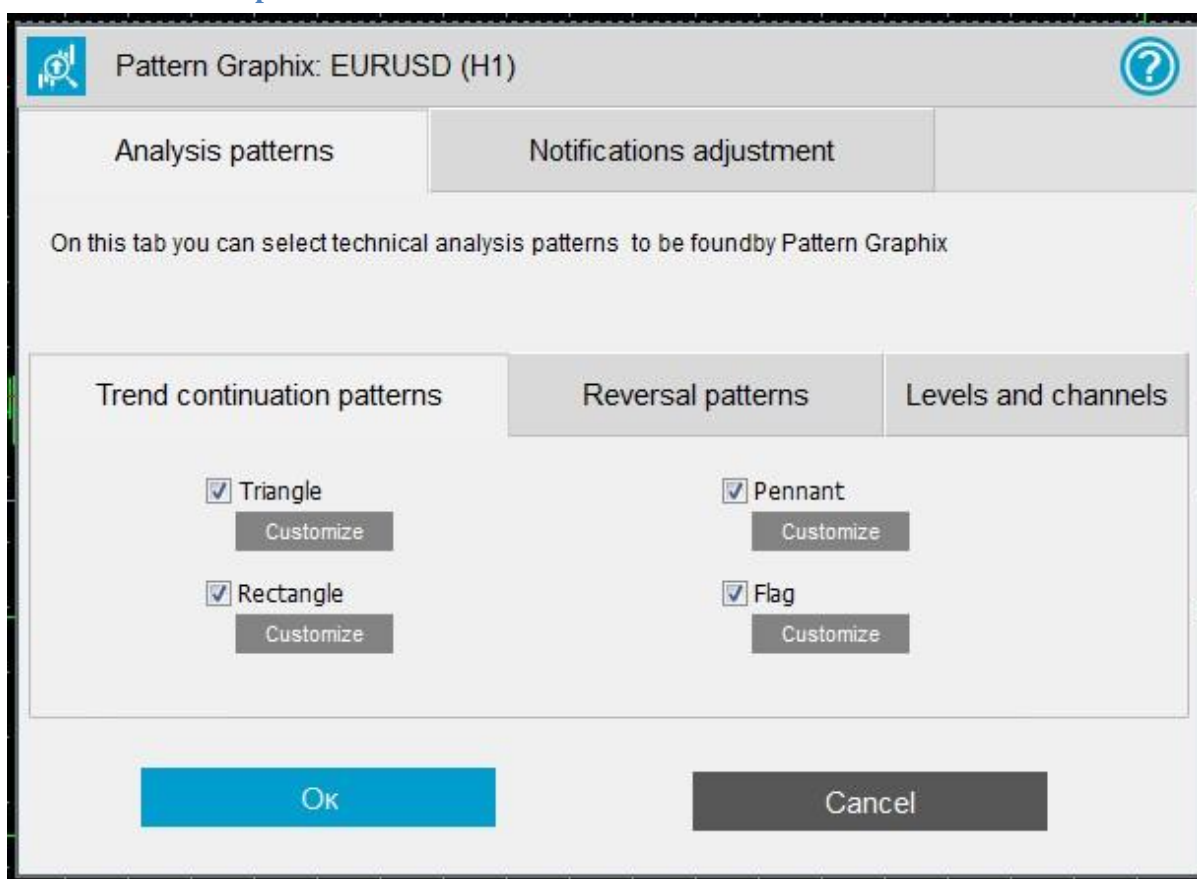


The button is revealed downward by hovering over the blue square with the mouse:



## Analysis Patterns

### Trend continuation patterns

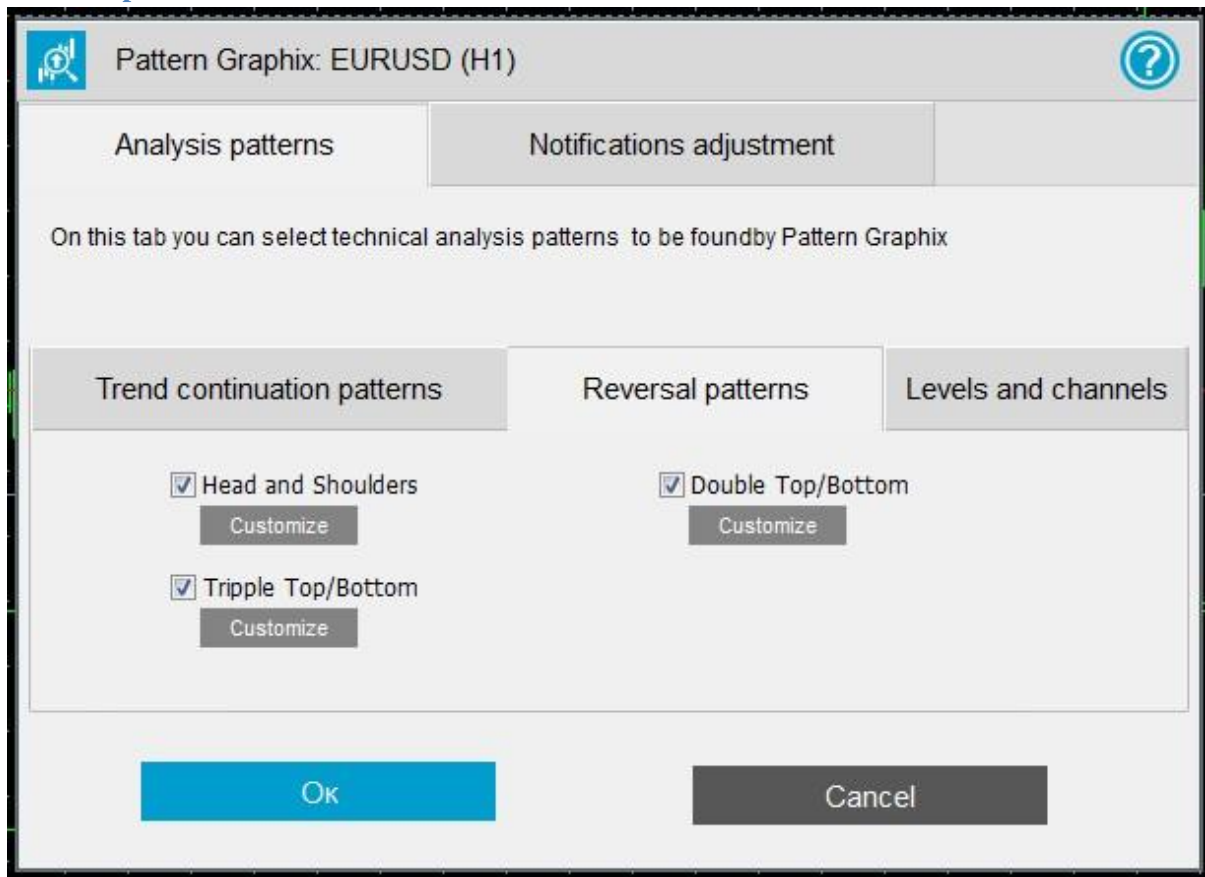


The subtab Trend continuation patterns of the Analysis Patterns tab consists of the following elements:

1) A **Triangle** determines whether you will be searching for a Triangle pattern of technical analysis.

- 2) A **Rectangle** determines whether you will be searching for a Rectangle pattern of technical analysis.
- 3) A **Pennant** determines whether you will be searching for a Pennant pattern of technical analysis.
- 4) A **Flag** defines determines whether you will be searching for a Flag pattern of technical analysis.
- 5) The button **Customize** opens the color setting window.

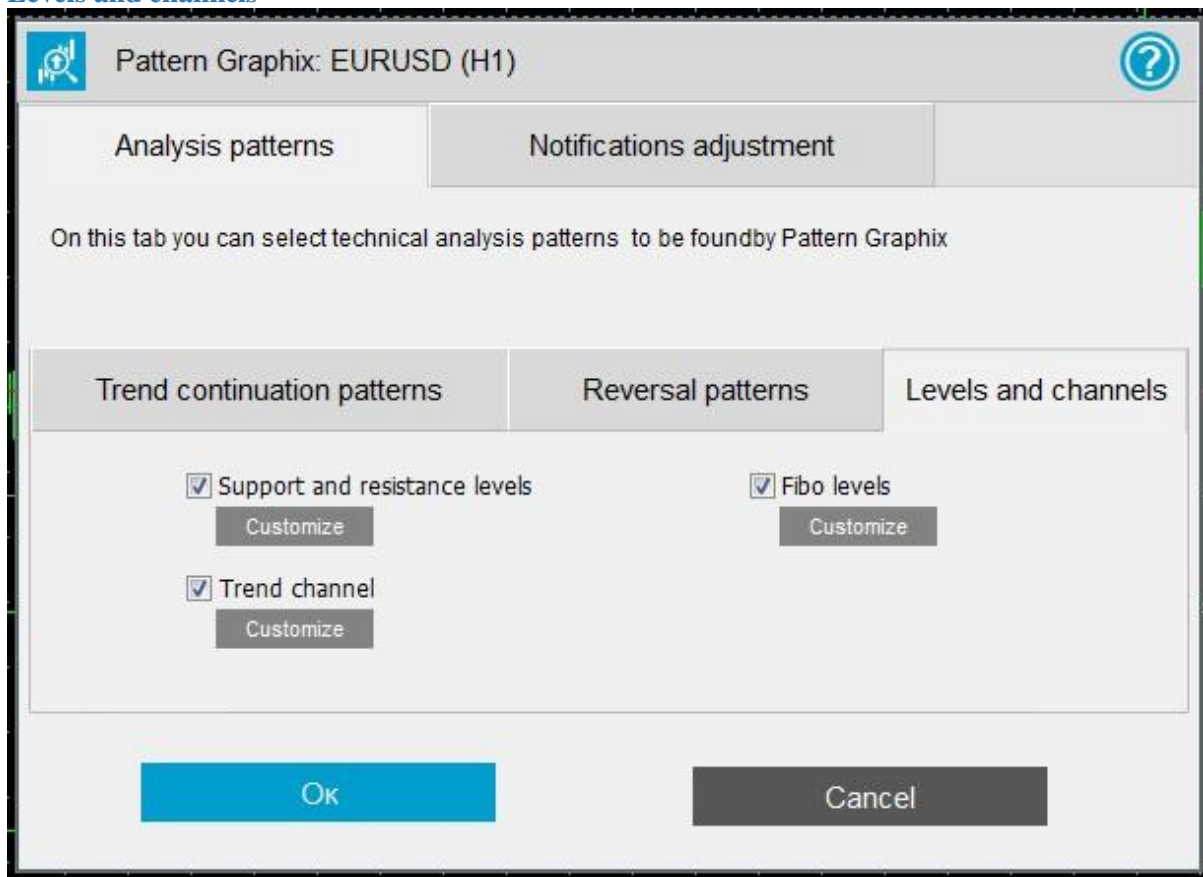
### Reversal patterns



The Reversal patterns subtab of the Analysis patterns tab consists of the following elements:

- 1) **Head and shoulders** determines whether you will be searching for a head and shoulders pattern of technical analysis.
- 2) **Triple top and triple bottom** determines whether you will be searching for a triple top and triple bottom pattern of technical analysis.
- 3) **Double top and double bottom** determines whether you will be searching for a double top and double bottom pattern of technical analysis.
- 4) The **Customize button** opens the color setting window.

## Levels and channels

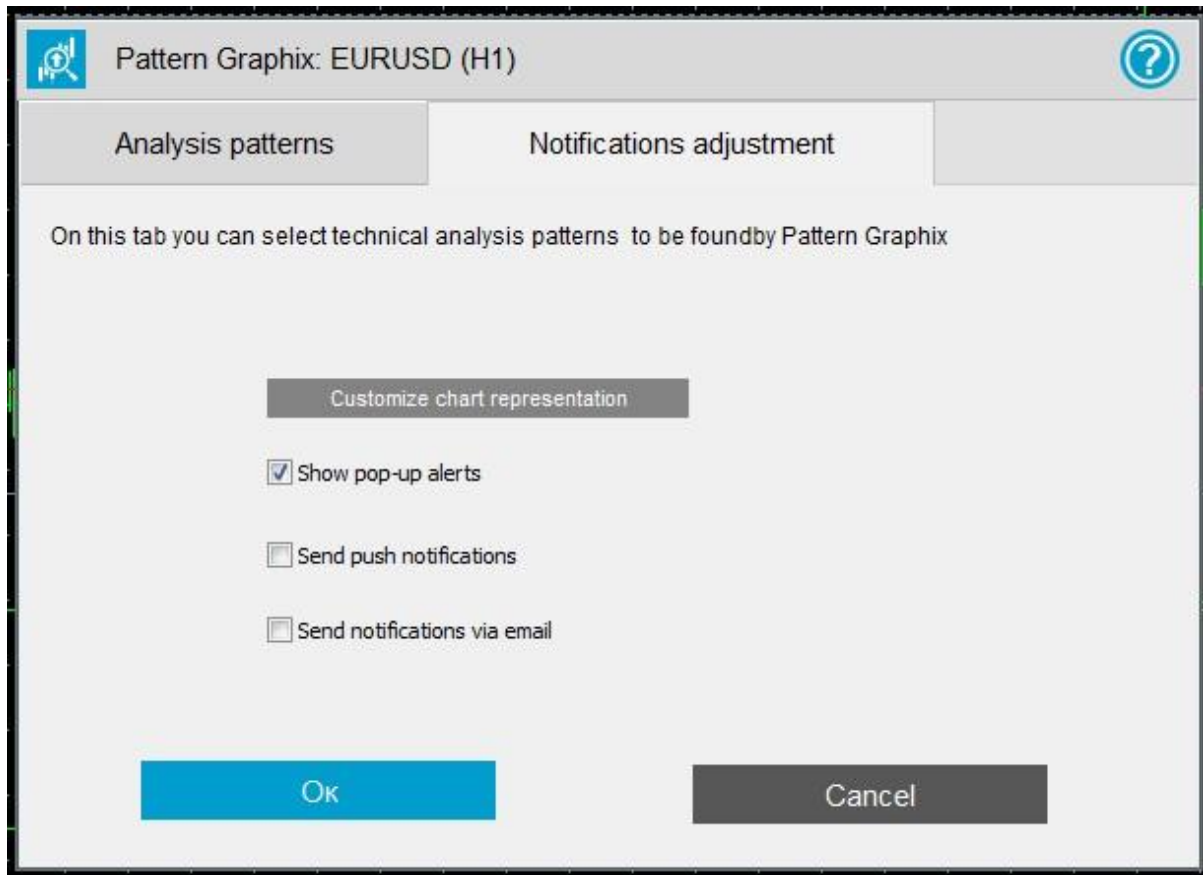


The Levels and Channels subtab of the Analysis patterns tab consists of the following elements:

- 1) **Support and resistance lines** determines whether you will search for Support and resistance lines.
- 2) **Trend channel** determines whether you will search for a Trend channel pattern of technical analysis.
- 3) **Fib levels** determines whether you will search for the current Fibonacci levels.
- 3) **The Customize button** opens the color setting window.



## Notifications Adjustment



The Notifications Adjustment tab consists of the following elements:

- 1) **Show pop-up alerts** – determines whether pop-up messages (alerts) will be displayed in MetaTrader 4.
- 2) **Send PUSH-notifications** – determines whether PUSH-notifications will be sent. In order for them to work, you need to:
  1. Register at [www.mql5.com](http://www.mql5.com):
  2. Indicate your MetaQuotes ID in MetaTrader 4 (Tools → Options → Notifications)
  3. Indicate your MetaQuotes ID in the mobile version of MetaTrader 4 (Options → MetaQuotes ID)
- 3) **Send notifications via email** – determines whether email notifications will be sent. For the correct notifications data out you should adjust email in MetaTrader 4 (Tools → Options → Email).